

PART OF NORTH EAST 1/4 SECTION 22, T.6N., R.1W., S.L.B.&M.
ROLLING HILLS ADDITION NO. 4

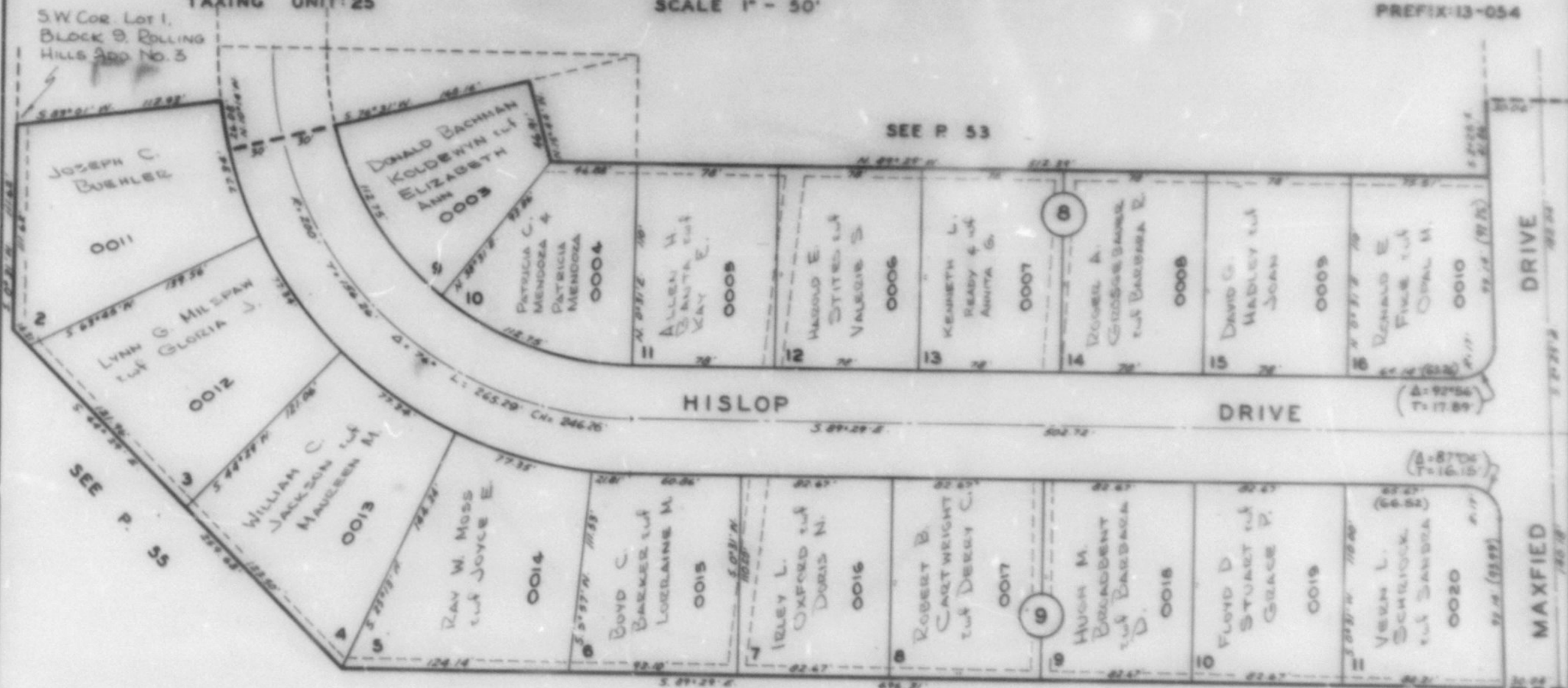
54

PARTS OF BLOCKS 7, 8, 9 & 10

TAXING UNIT: 25

SCALE 1" = 50'

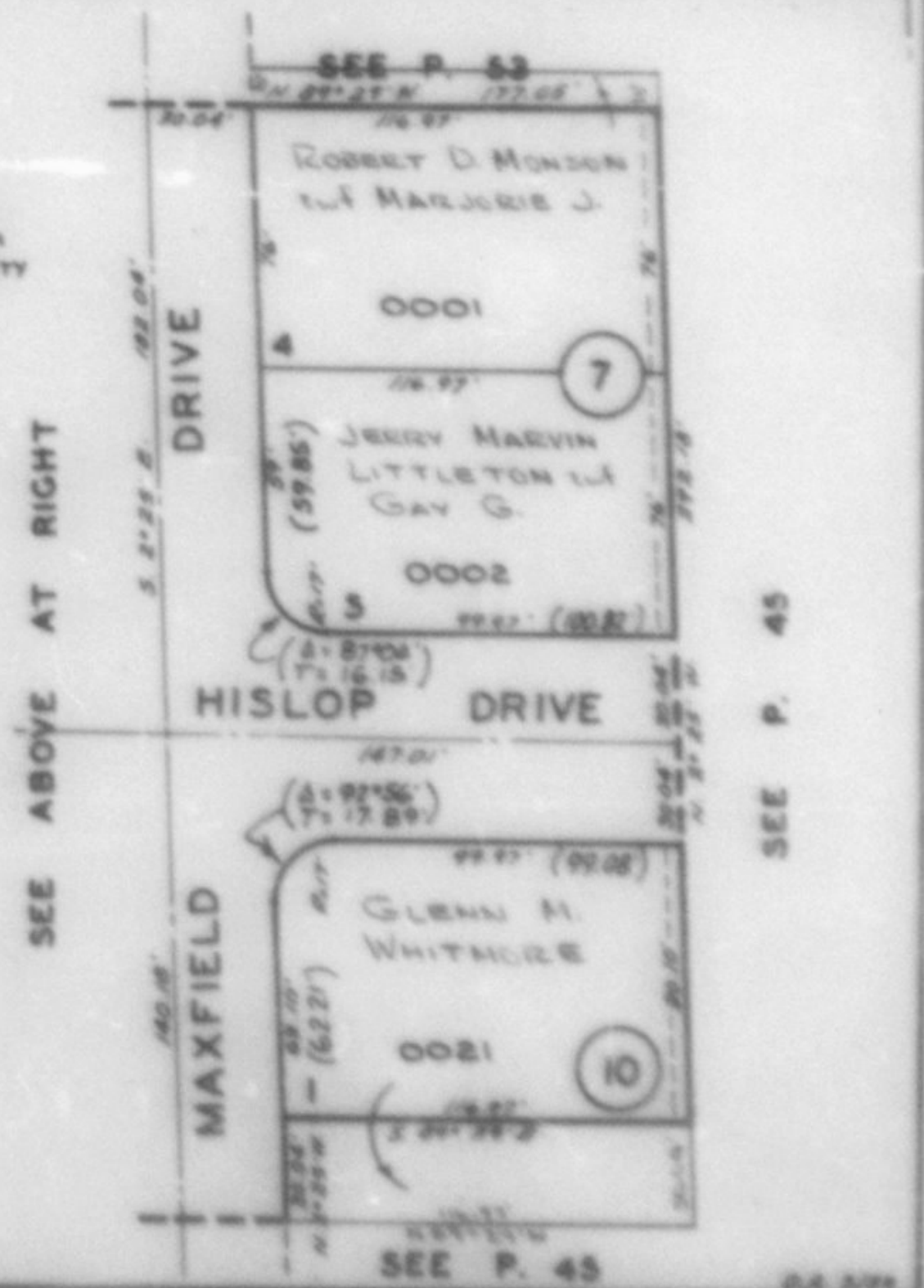
PREFIX: 13-054



SEE P. 45

NOTE:
 LOT DIMENSIONS OF ORIGINAL PLAT WERE IN ERROR AT
 INTERSECTION OF MAXFIELD AND HISLOP DRIVES. FIGURES IN
 PARENTHESES REPRESENT RECALCULATIONS BY DENVER CITY
 ENGINEERING DEPT., NOT OFFICIALLY RECORDED.

SEE ORIGINAL PLAT IN BOOK 12, PAGE 4



SEE P. 45

SEE P. 45